

Dell Laser Printer 3000cn/3100cn



DELL MAKES IT EASY TO BUY, USE AND OWN PRINTERS

Easy to Buy

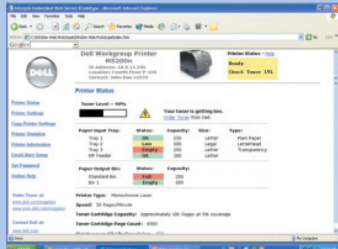
Dell Direct Advantage: Order online or through our professional sales team
Great performance for the price
Uniquely configured for each customer
Convenient recycling options included with hardware & toner at no additional cost

Easy to Use

Industry-standard network compatibility
Color matched to Dell clients and servers

Easy to Own

Convenient toner ordering & delivery with Dell Toner Management System™
Dell award-winning service & support staff
Wide range of service offerings
One-stop shopping and support with Dell printers, systems, & network products



Dell Printer Web Tool for 3000cn/3100cn

Designed for easy installation, configuration and management of Dell network printers and consumables. This web-based tool can be set up to provide automatic e-mail notifications of printer, consumables & paper-handling alerts.

- Access using a standard web browser
- No additional software installation
- Resides on printer hardware



Dell™ Color Laser Printer 3000cn and 3100cn are reliable color laser printers for small business, at the price of black and white. The 3000cn and 3100cn offer fast printing speeds of up to 25 pages per minute in black and up to 5 pages per minute in color* - with low total cost of printing. You will appreciate the durable duty cycle of up to 45,000 pages-making it ideal for a small business environment.

Color control drivers (Dell ColorTrack™) can save money by minimizing toner usage. Easily manage supplies with the Dell Toner Management System™. Other features include standard networking, up to 900 pages of maximum input capacity, 64 MB of memory- expandable to 576MB and optional duplexing.

*Actual print speeds will vary with use.

The Dell Color Laser Printer 3000cn & 3100cn deliver:

Outstanding Performance

- Fast printing - Enhanced productivity with up to 25 ppm in black & white, & up to 5 ppm in color*
- Sharp print quality - 600 x 600 dpi (2400 dpi Image Quality)
- Flexible - Customizable for your needs
- Durable - Up to 45,000 page monthly duty cycle

*Actual print speeds will vary with use.

Quality Dell Service & Support

- 24x7 toll-free technical phone support
- One-year Next-Business-Day Onsite Service² that includes Fuser Maintenance replacement in the base and extended limited warranty³
- Extended service options up to 4 years are available
- Other options include Printer Gold Technical Phone Support, Installation & Asset Tagging

Easy to Use

- Dell Printer Web Tool helps you quickly & easily manage individual printers
- Easy toner installation using drop-in cartridge design
- 2x16 text LCD operator panel clearly displays toner level & other consumables indicators

Easy to Afford

- Similar purchase price as comparable Black and White laser printers
- Low toner cost per page
- 3-5 day shipping of toner included**
- Dell Color Track™ driver can lower your total cost of printing by offering a separate monochrome print driver that allows you to designate monochrome and/or color printing on an individual or workgroup basis

**Valid for Continental (except Alaska) U.S. only

Convenience - Easy to Get Toner

- Dell Toner Management System™ - Intelligent toner monitoring proactively notifies you before you run out of toner
- Direct link to order toner at www.dell.com/supplies from Low Toner alert
- 3-5 day shipping included at no additional charge⁵, overnight shipping available
- Environmentally friendly: Dell pays postage to return toner cartridges to Dell for recycling
- Lifetime limited toner cartridge warranty³

3000cn or 3100cn, which one is right for my business?

FEATURE	3000cn	3100cn
Print Languages:	PCL 6, PCL 5e	PCL 6, PCL 5e, PS 3
OS Compatible:	Windows® (98, 2000, Me, NT 4.0, XP, Server 2003)	Operating system compatibility with Windows®, Mac, Unix, Linux and Novell NetWare; Optional Multi Protocol Card is required for IPP, IPX/SPX (NetWare P-Server), AppleTalk and SMB protocols
Standard Paper Input:	150-sheet MPT (Multi-Purpose Tray)	400-Sheet (Standard 250-sheet + 150-sheet MPT)
Toner Cartridge¹:	Ships with 2K pg (black), 1K pg (color) Available 4K pg (black), 2K pg (color)	Ships with 4K pg (black), 4K pg (color) Available 4K pg (black), 2K & 4K pg (color)

Dell Laser Printer 3000cn / 3100cn

DELL TONER MANAGEMENT SYSTEM™ IS AS EASY AS 1-2-3

1. Intelligent software alerts you when toner levels are low. Select the recipient of the alert using the Dell Printer Web Tool.

2. Click "Order Toner Online" and connect directly to www.dell.com/supplies and www.premier.dell.com or call 1-877-Ink-2-You.

3. Select printer model, enter your payment information and your toner is ordered. Save time and money with no additional charge three- to five-day ground shipping.⁵

SERVICE AND SUPPORT

One year of Next-Business-Day Onsite Service² provided by Dell's award-winning service & support staff.

- 24x7 toll-free technical phone support
- You can upgrade your NBD Onsite Service² up to four years
- You can use the Dell Online Support site for the most up-to-date drivers and technical information about your printer. Visit www.support.dell.com for details.

RECYCLING MADE SIMPLE



Recycling printers and toner with Dell is easy, safe and no charge to the customer. Visit www.dell.com/recycling for details.

- Each Dell printer includes instructions for returning an old printer for recycling
- Dell toner cartridges include a prepaid label to return the used cartridge for recycling

FEATURES DESCRIPTION

Product Type:	Networked color-capable laser printer
Print Speed:	Up to 25 pages per minute (ppm) monochrome, up to 5 ppm color*
Print Resolution:	600 x 600 dpi - up to 2400 dpi Image Quality output
Processor:	300 MHz
Memory:	64 MB standard; 576 MB maximum
Duty Cycle:	Up to 45,000 pages per month
Media Sizes Supported:	A4, B5, A5, Letter, Executive, Legal-13, Legal-14, come-10, Monarch, DK, C5, Custom size Multipurpose Tray (MPT only); 90mm-219.5mm (W), 139.7mm-355.6mm (L)
Media Types Supported:	Plain Paper 1 (Light), Plain paper 1 (Normal), Plain paper 2, Cover 1, 2, Coated paper 1, 2, Transparency, Label stock, 1, 2, envelope, weight 60gsm-216gsm
Paper Weight:	Standard and optional drawer feeds: 60 to 90 gsm Manual feed via MPT: 60 to 216 gsm
Standard Input Drawer:	150-sheet multi-purpose tray (MPT) on 3000cn; 150-sheet MPT + 250-sheet drawer on 3100cn
Output Capacity:	250 sheets
Additional Input Drawers:	250-sheet A4 drawer, 250-sheet legal drawer, 500-sheet A4 drawer
Maximum Input Capacity:	900 sheets on both models (3000cn allows for two additional drawers, 3100cn allows for one additional drawer)
Duplex Unit (Print both sides):	Optional
Low Toner Warning:	Dell Toner Management System™ - included on printer driver Web access via Dell Printer Web Tool
Additional Toner:	Available through Dell online or by telephone
Toner Cartridges:	3000cn ships with 2K page capacity (Black) and 1K page capacity (Cyan, Magenta and Yellow) ¹ . 4K page capacity (Black) and 2K page capacity (Cyan, Magenta and Yellow) are available ¹ . 3100cn ships with 4K page capacity (Black, Cyan, Magenta and Yellow) cartridges ¹ . 2K (Cyan, Magenta and Yellow) are available ¹ .
Toner Recycling:	Toner cartridges are recyclable using Dell's recycling program, details of which are included with each product
Additional Consumables:	Imaging drum (42,000 pages for black and white printing or 10,500 pages for color printing) - included as standard with new printer
Print Languages	3000cn - PCL 5e and PCL6; 3100cn - PCL 5e, PCL6, PostScript Level 3
Font Support:	81 fonts and Symbol Sets, 35 fonts for PCL and 136 fonts for PS3
Connectivity:	10/100BaseT Ethernet, USB 2.0 and Parallel 1284 ports as standard (cables not included)
Compatible Operating Systems:	3000cn - Microsoft® Windows® XP, 2000, ME, 98; Windows NT® 4.0, Server 2003 3100cn - Windows®, Mac, Unix, Linux and Novell NetWare. Optional Multi Protocol Card is required for IPP, IPX/SPX (NetWare P-Server), AppleTalk and SMB protocols
Printer Management:	Dell Printer Configuration Web Tool; Dell Color Track™ and Dell Toner Management System™
Standard Service:	1 Year Next Business Day onsite service ¹ (fuser maintenance coverage included)
Service Options:	Extended service options are available up to 4 years
Operating Environment:	Relative Humidity 15-80% Normal condition, 5-15% and 80-95% Extreme condition Temperature 0°C to 35°C Normal, -20°-0°C and 35°-40° C Extreme condition
Power Supply:	115/120V 110 - 127VAC +/- 10% (90V - 140V) 50+/-3Hz/60+/-3Hz, 220/240V 220-240VAC +/- 10% (198V - 264V)
Power Consumption:	Power Safe mode is 30W or less, Standby mode is 82W or less, During B/W Continuous Printing is 300W or less, Maximum Rated Value is 900W or less (full option configuration)
Sound Power:	Standby Noise level (B) is <4, Print Noise Level (B) is <6.3, Print Impulse Noise Level (B) is <6.6
Dimensions:	3000cn - 16.7" x 16.5" x 17"; 3100cn - 16.7" x 16.5" x 21"
Weight:	3000cn - 53 lbs; 3100cn - 69.5 lbs

*Actual print speeds will vary with use



Exceptional Performance. Easy as **DELL™**